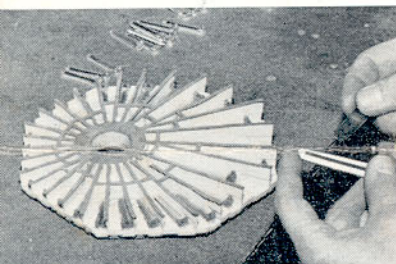


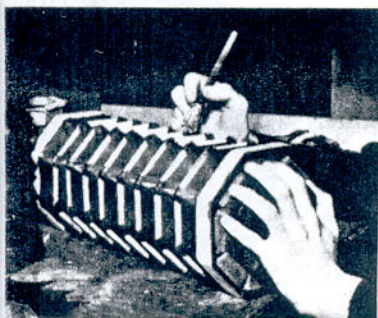
Intricate, hand operated machinery is used to rout out the reed unit slots in the sound board.



Fitting valves to the assembled sound board—or reed pan as we call it—prior to tuning.



Assembling the action. In an instrument of this size— a 40 key "Anglo" model—there are over 400 parts in the action alone.



Early stages in the manufacture of the bellows. Almost 250 pieces are used in the assembly of the 8-fold bellows shown.



The House of Wheatstone was established in the year 1750 and carried on the business of Music Publishers and manufacturers of all types of musical instruments. In 1827 Sir Charles Wheatstone invented the Wheatstone Concertina which became so popular that the Firm had to concentrate solely on its manufacture.


Today Wheatstone Concertinas are made at Edgware, Middlesex, and are exported to World markets. The machine plays a minor part in their manufacture, the many processes and intricate parts involved calling for the skill of craftsmen. It is by this means that Wheatstone Concertinas, after two centuries, are still regarded by players everywhere as the finest available.

**Tuning:** Unless otherwise stated, all instruments are tuned to standard International pitch A.440=C.523.3 vibs.

## THE "ENGLISH" MODELS

The English Concertina is undoubtedly the most popular, the fingering system being remarkably simple. Once mastered, even the most difficult solos can be played.


**Model 2E.**  
(Illustrated)  
Range:



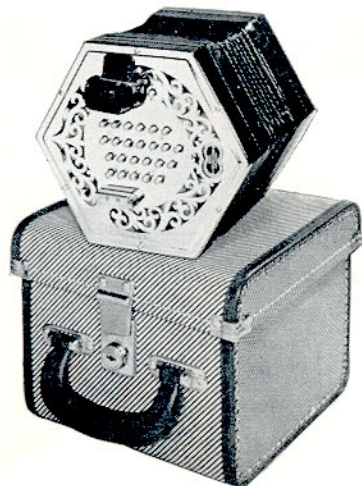
48 keys, nickel silver capped, steel reeds, six fold bellows, chrome finish, 6¼" hexagonal, supplied complete in case.

**Model 4E. "Aeola"**

Range:




48 keys, nickel silver capped, steel reeds, six fold bellows, raised keyboard, chrome finish, 6½" octagonal. Supplied complete in case.



## THE "ANGLO-CHROMATIC" MODELS


This system lends itself to the player who does not read music. The principle is similar to that of a mouth organ, i.e., a different note is produced—varying by half a tone—depending whether air is drawn in or blown out.

**Model 3A.**  
Range:



20 keys, nickel silver capped, steel reeds, six fold bellows, chrome finish, 6¼" hexagonal. Supplied complete in case.


**Model 4A.**  
(Illustrated)  
Range:



30 keys, nickel silver capped, steel reeds, six fold bellows, chrome finish, 6¼" hexagonal. Supplied complete in case.

**Model 6A.**

Range:



40 keys, nickel silver capped, steel reeds, six fold bellows, chrome finish, 6¼" hexagonal. Supplied complete in case.



**Model 7A. "Professional Aeola"**

Range:



40 keys, nickel silver capped, steel reeds, eight fold bellows, ebony finish, 6¾" octagonal. Supplied complete in case.

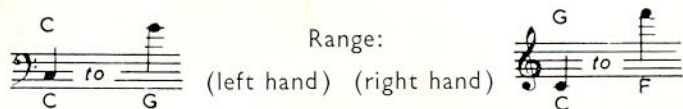
## THE "DUET" MODEL

(Crane or Triumph System)

The Duet Model was originally introduced to play two-part music. It has a complete chromatic scale on each side with the middle octave duplicated on both sides. The Crane or Triumph Concertina has a five row system and has been popularised by the Salvation Army.

**Model 2T. "Triumph" system**

Range:



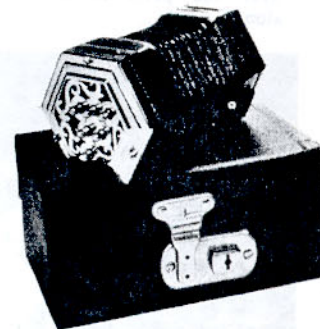
Range: 48 keys, nickel silver capped, steel reeds, six fold bellows, chrome finish, 7" hexagonal, supplied complete in case.

## THE MINIATURE "ENGLISH SYSTEM" CONCERTINA

**Model M.1. "Miniature"**

12 keys, nickel silver capped, steel reeds, eight fold bellows, chrome finish, hexagonal, supplied complete in case.

Diameter across fret 2¾". Diatonic key of G Octave and a third from G in the first space above the treble clef.



**C. WHEATSTONE & CO. LTD.**  
SONOROUS WORKS, DEANSBROOK ROAD  
EDGWARE, MIDDLESEX. Tel. No. EDG 558